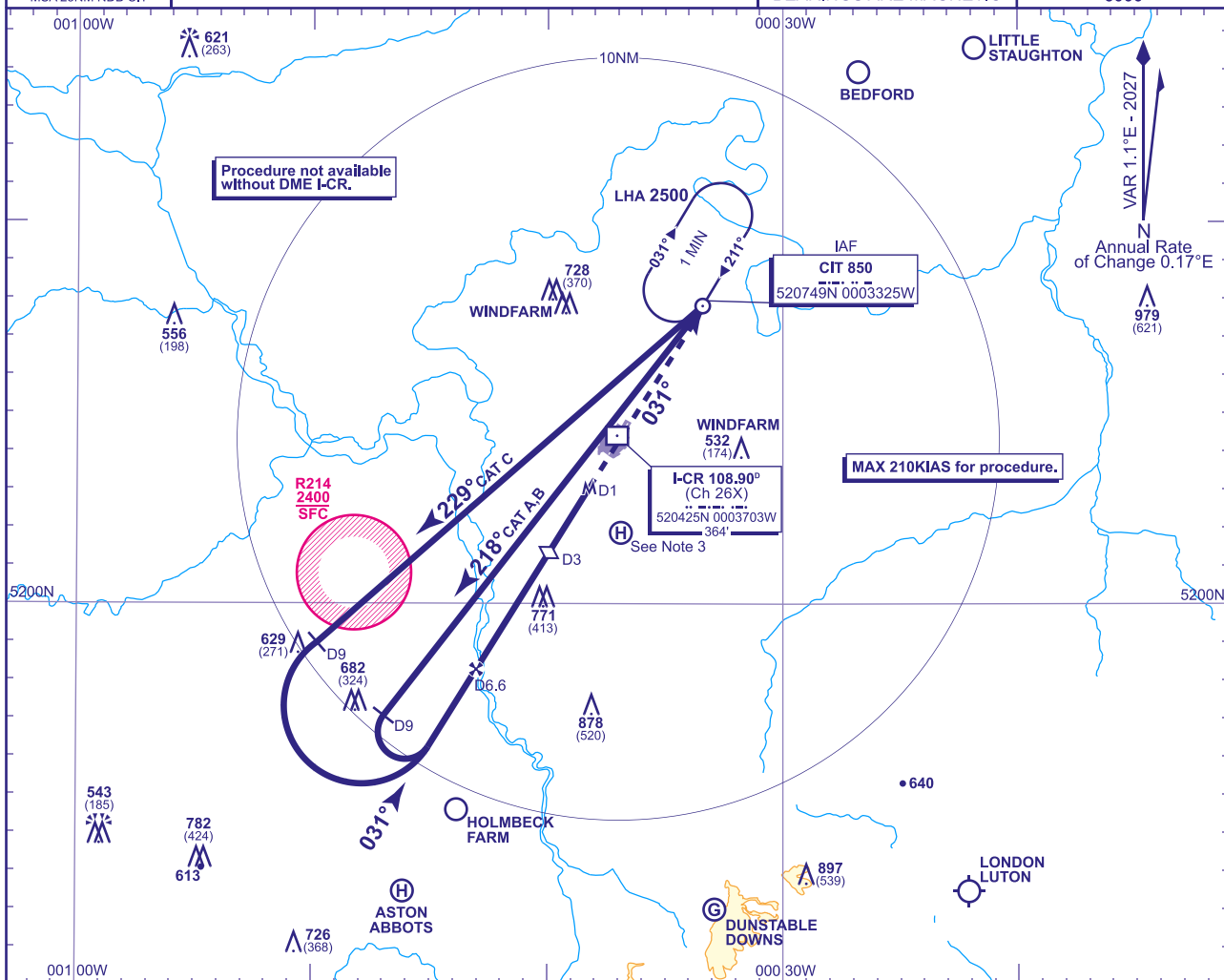


**CRANFIELD
NDB(L)/DME
RWY 03**
(ACFT CAT A,B,C)



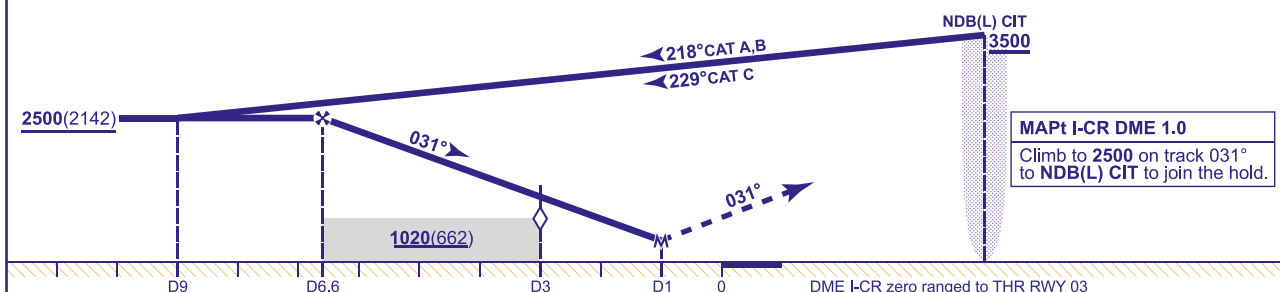
APP 122.855	CRANFIELD APPROACH	AD ELEVATION 360
TWR 134.930, 122.855	CRANFIELD TOWER	THR ELEVATION 358
		OBSTACLE ELEVATION 979 AMSL (621) (ABOVE THR)
		BEARINGS ARE MAGNETIC

TRANSITION ALTITUDE
6000



RECOMMENDED PROFILE Gradient 5.2%, 320FT/NM

DME I-CR	6	5	4	3 (SDF)	2
ALT(HGT)	2310(1952)	1990(1632)	1680(1322)	1360(1002)	1040(682)



Aircraft Category		A	B	C	Rate of descent FT/MIN	G/S KT	160	140	120	100	80
OCA (OCH)	Procedure	730(372)	730(372)	730(372)			850	740	630	530	420
VM(C)OCA (OCH AAL)	Total Area	800(440)	970(610)	1150(790)							

NOTES 1 CIT NDB(L) hold restrictions: MAX holding level **5000**, MAX 180KIAS.
2 Intensive glider activity takes place beneath the LTMA in VMC and in IMC.
3 Occasional helicopter activity at Helimech Helipad (520152N 0003653W).

CHANGE (13/25): MAG INFO REVISED. MAG HEADINGS.

AERO INFO DATE 07 OCT 25

AD 2-EGTC-8-2